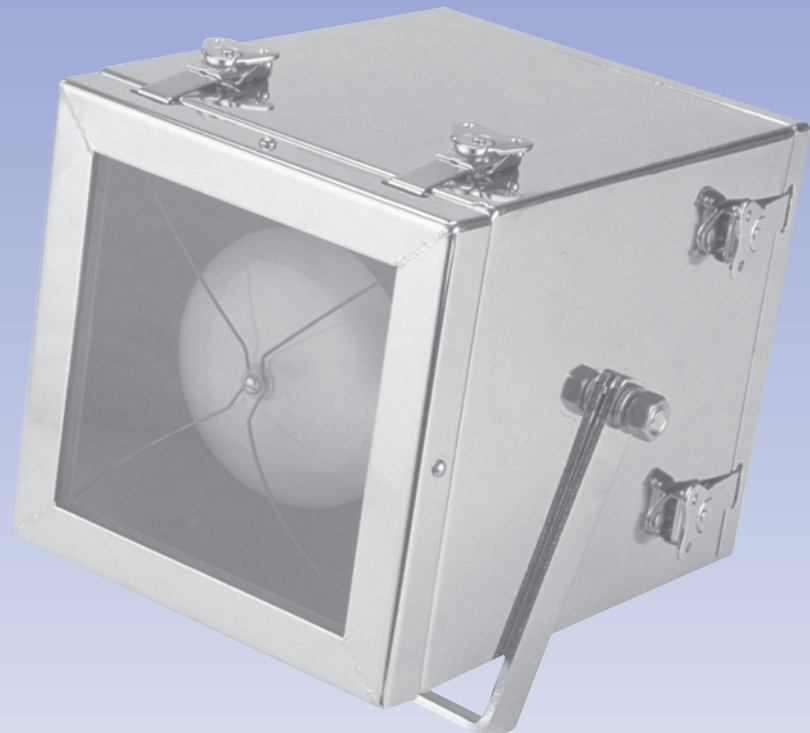


PPF SERIES

Stainless Steel High Temperature Area Floodlight

- CUL
- UL 1598 Wet Locations
- NEMA 4X

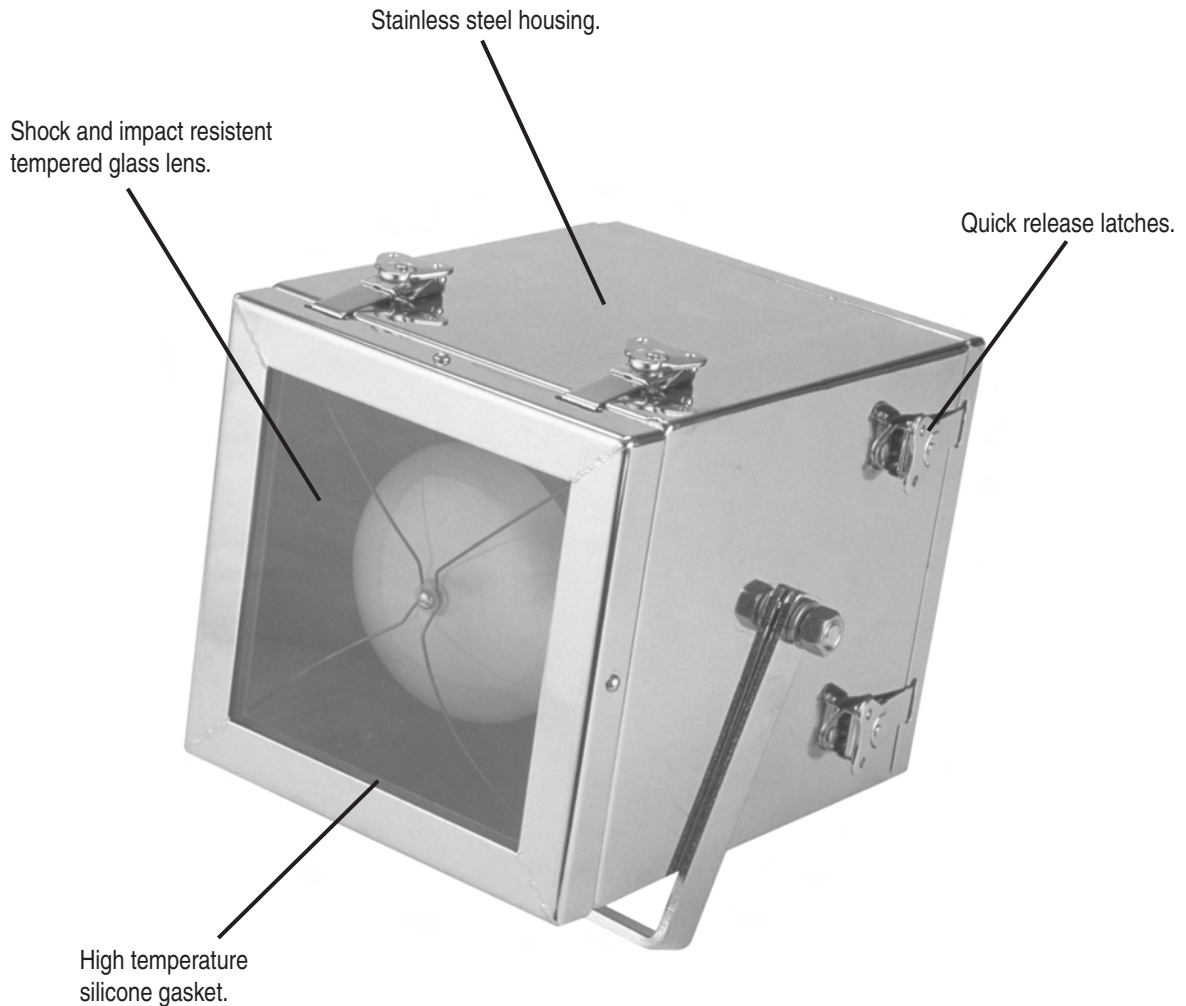


AZZ | R-A-L™
RIG-A-LITE

PPF SERIES

Stainless Steel High Temperature Area Floodlight

This remotely ballasted fixture, originally designed to be used in inspection areas of paper mills, has proven to be a reliable option in many high temperature areas.



METAL HALIDE

PPF Series

UL 1598 Wet Locations • NEMA 4X • Lighting for High Temperature Areas

Catalog Number Logic

PPF 15H-CA-04-R-PS

1

2

3

4

5

6

1

BASIC SERIES

PPF Series Stainless Fixture
CUL
UL 1598 Wet Locations
NEMA 4X

2

LAMP CURRENT/LAMP WATTAGE

150W Metal Halide PAR30 Reflector Lamp

3

REMOTE BALLAST¹

CA = Core & Coil Ballast in NEMA 4
Cast Aluminum Enclosure
BO = Remote Ballast by Others

4

BALLAST VOLTAGE

04 = Multi-Tap
12 = 120 Volt 60HZ (Standard)
20 = 220 Volt 50HZ

5

FINISH

R = Raw Stainless Steel (Standard)
AC = Acid Washed
EP = Electro-Polished

6

OPTIONS²

PS = Pulse Start

¹Ballast must be installed within 10 ft. of lamp.

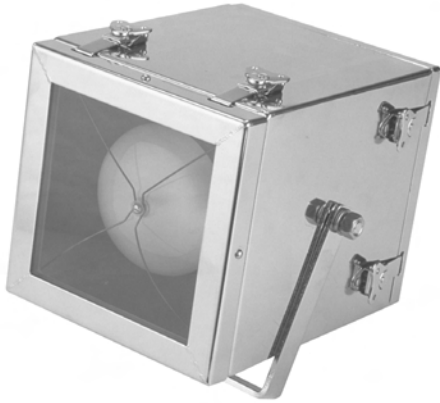
²Consult factory for pricing.

Catalog logic is for explaining catalog number structure only. Not all combinations are possible; consult factory for catalog numbers not listed in charts.

METAL HALIDE

PPF Series

UL 1598 Wet Locations • NEMA 4X • Lighting for High Temperature Areas



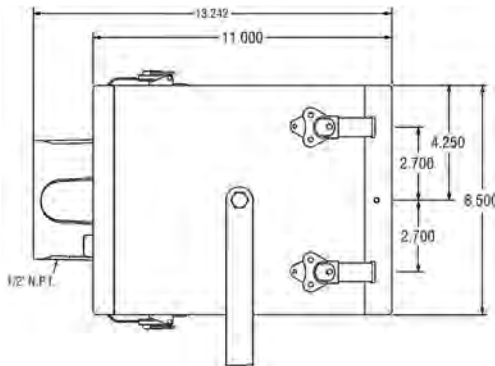
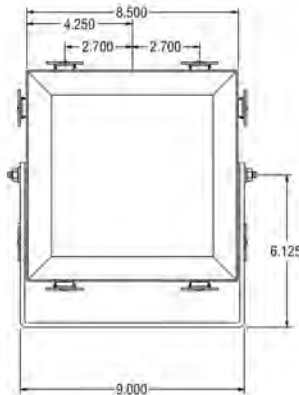
- Stainless steel housing
- Quick release latches front and back cover
- Cast aluminum splice box
- Porcelain medium base socket with 200°C leads
- Lamp stabilizer
- High temperature extruded silicone rubber gasket
- Flat, clear glass lens is tempered, thermal shock and impact resistant

(Lamp included)

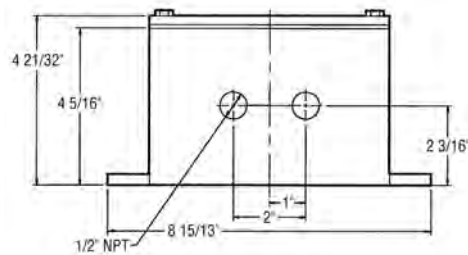
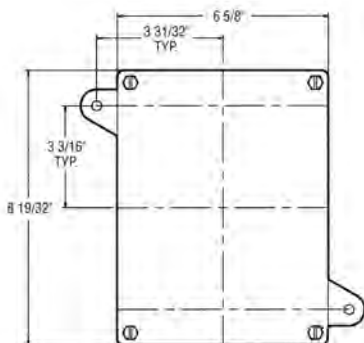
Fixture Type	Lamp Wattage	Voltage	Catalog Number	Weight (Lbs.)
Metal Halide	150	120V 60HZ	PPF15H-C-A-12-R-PS	30.9
		220V 50HZ	PPF15H-C-A-20-R-PS	31.5
		Multi-Tap*	PPF15H-C-A-04-R-PS	31.5

* 120/208/240/277V 60HZ
Replacement Lamp: Sylvania MCP 150/PAR38/U/830/VWFL/ECO PB Lamp

Fixture Dimensions (inches)



Remote Ballast Dimensions (inches)



METAL HALIDE

PPF Series

UL 1598 Wet Locations • NEMA 4X • Lighting for High Temperature Areas

Parts List

CATALOG NUMBER PPF15H-CA-O4-R-PS



- Note: 1. Above drawing and part numbers are for fixture catalog no. PPF15H-CA-O4-R-PS.
2. Parts may vary for other models. Contact factory if parts for other models are required.
3. Ballasts and lamps are listed on separate pages.

Part No.	Description	Weight
02172	BALLAST & CAP MH 150W MTB PS	7.2
16225PPF	JUNCTION BOX	1.2
26736	COVER PLATE JUNCTION BOX	0.2
34106	GSKT LENS FRAME WSM	0.1
34110	GSKT COVER PL JBOX	0.1
36024	GSKT JBOX BASE	0.1
36024	LENS CLEAR TMPD GLASS	1.3
44123	LAMP MH150W PAR38 MED BASE	0.1
70060	LPHLDR MED BASE 4KV PULSE	0.2
82025	RETAINER LAMP	0.9

NOTES